

Fi4



SOLUTION

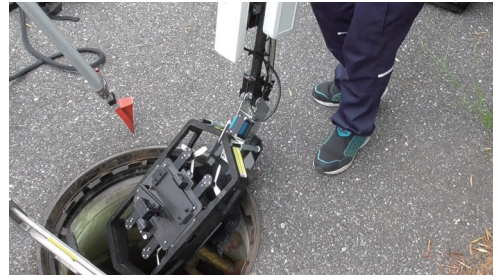
Fi4 makes inspection in narrow pipes and confined spaces more efficient with its stable flight capability

Failures due to deterioration of sewage pipes directly affect the safety of our daily lives, causing roads and railroads to collapse. However, it has been difficult to inspect vast stretches of pipelines efficiently and safely...

Fi4 can take footage while flying over the water surface, eliminating the need for workers to step into underground space as well as enabling faster and safer inspections. In short, Fi4 liberates workers from tough work.



Fi4 flies through the pipe at the speed up to 3m/s, enabling fast and efficient video shooting.



(Top) Thanks to the proprietary launch pad, operators do not have to go inside the manhole.

(Bottom) Anybody can control Fi4 easily with the smart controller.

CORE SET

Inspect pipes with diameter of 400mm or larger

Fi4 is for inspection of confined spaces such as narrow sewage pipes. A quick assessment of the pipe condition using Fi4 helps to reduce the overall cost of pipe asset management. It is also durable enough to be retrieved by the tether line after reaching the inspection endpoint thanks to its lightweight and strong carbon material.

Fi4 is equipped with LED light and FPV both at the front and rear, allowing the operator to operate the drone with real time FPV even inside a dark pipe. In addition, maintenance is easy as the body can be washed by water after use.

SPECIFICATION

Structure	
Length	610 mm
Width	290 mm
Height (upper side of the body)	145 mm
Height (upper side of the camera)	220 mm
Weight	2.4 kg (1.6 kg for the main body) (including survey camera and battery)

Flight Control System	
Autopilot	ACSL AP3

Performance	
Maximum Flight Speed (horizontal)	3 m/s
Maximum Flight Time	About 4 minutes
Water-proof capability	IP55

Battery	
Capacity	5,200 mAh
Type	LiPo 4S

Basic Function	
Data communication by smart controller (video, piloting, telemetry)	

*Product specifications are subject to change without notice.

Inquiry